

DISCLAIMER

1. This drawing is the property of Cameo & Partners Ltd.
2. It must not be copied or reproduced without written consent.
3. Do not scale from this drawing.
4. Check all dimensions on site before setting out.

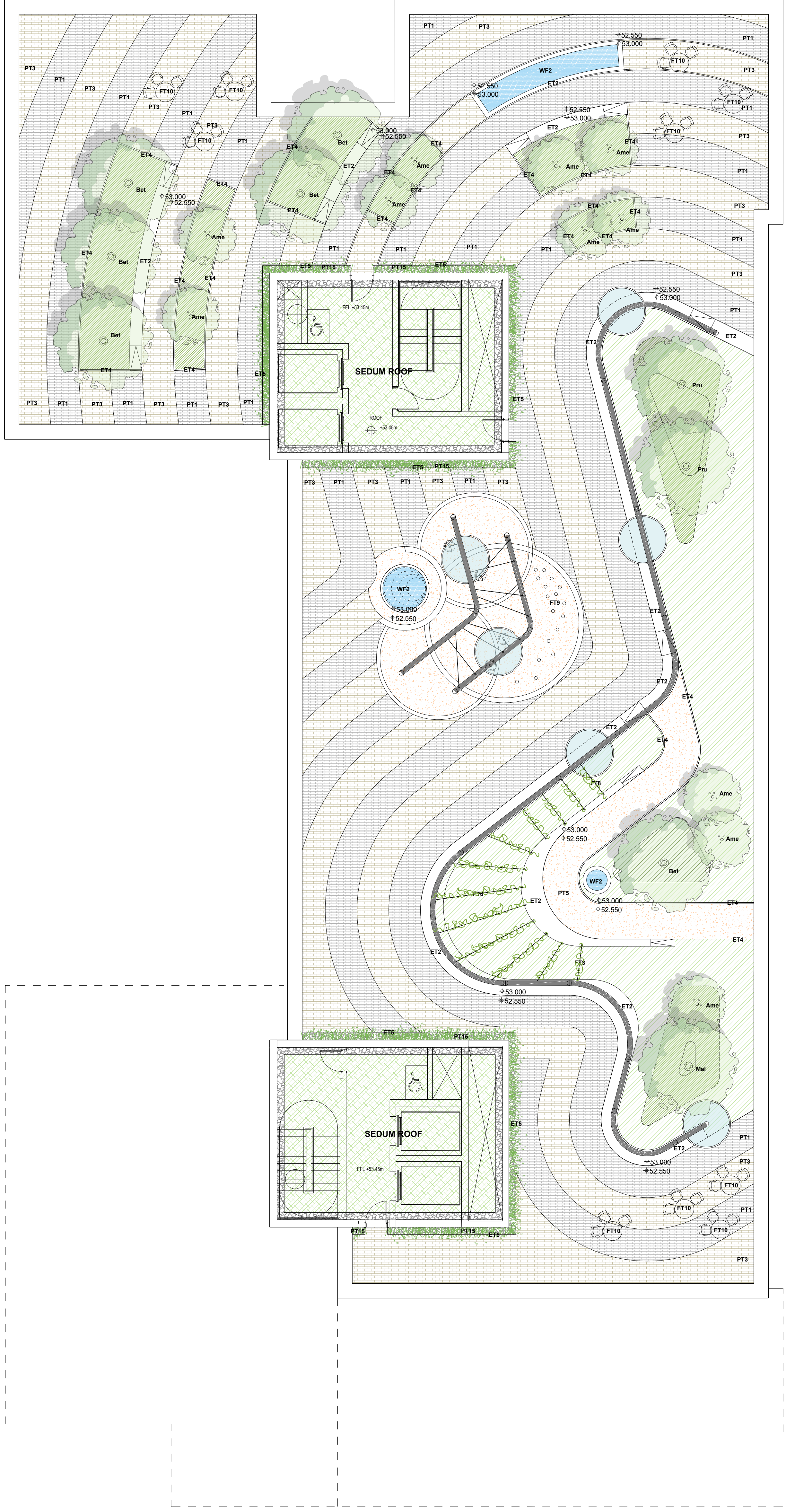
PROPOSED HARD LANDSCAPE

- Paving Type 1:** Buff Coloured Granite Slabs
Size: 100x200, 200x400, 400x600, depth 80mm.
Colour: 3 shades of light buff.
Supplier: Stonepave or Similar Approved
- Paving Type 3:** Buff Coloured Granite Setts
Size: 100x100, depth 80mm.
Colour: 3 shades of light buff.
Supplier: Stonepave or Similar Approved
- Paving Type 5:** Wet Pour Safety Surface
Colour: 4 shades of yellow and orange.
Supplier: Soft Surfaces or Similar Approved
- Paving Type 15:** Slate chipping
Size: 20-30mm
Supplier: Kilsaran or Similar Approved/TBC
- Paving Type 16:** Concrete Stepping Stones
Size: 700x300x50mm
Supplier: Kilsaran or Similar Approved
- Edge Type 2:** High Performance Concrete Edges and Walls
Height/Colour: Various. Colour: White with etched surface.
Supplier: Cassidy Brothers or Similar Approved
- Edge Type 4:** Metal Planter Edge
Height/Colour: 500mm / To match architectural metalwork.
Supplier: CMQ3 or Similar Approved
- Edge Type 5:** Aluminium Edge
Height: 100mm. Width: 5mm/100mm
Supplier: EverEdge or Similar Approved
- Furniture Type 8:** Bespoke Metal Trellis System
Powder coated metal tubes with tension wires as a plant support for climber plants.
Colour to match architectural metalwork.
Supplier: Jakob Systems or Similar Approved
- Furniture Type 9:** Natural Play Equipment
Stepping logs and beams with a smooth finish.
Supplier: Natureplay Ireland or Similar Approved

- Furniture Type 10:**
Table with chairs. Notional only.
Client to confirm preferred product.
- Floor finish level / Level proposed**
+31.00 FFL
+31.000
- Water Feature**
Bespoke water feature with to be developed with water feature specialist.
- Bespoke metal structure**

PROPOSED SOFT LANDSCAPE

- Proposed Mature Tree**
Size: 35-40cm girth, RB, 2m clear stem.
Product: Refer to Planting Schedule
Supplier: Van den Berk/Tully Nurseries or Similar Approved
- Proposed Semi-Mature Multi-stem Tree**
Product: Refer to Planting Schedule
Supplier: Van den Berk/Tully Nurseries or Similar Approved
- Proposed Shrub Planting**
Product: Refer to Planting Schedule
Supplier: Tully Nurseries or Similar Approved
- Proposed Herbaceous Planting**
Product: Refer to Planting Schedule
Supplier: Tully Nurseries or Similar Approved
- Proposed Green Wall**
Supplier: ANS Global or Similar Approved



PROPOSED TREE SPECIES

Abbreviation	Scientific name	Common name	Size	Densities
Ame	Amelanchier l. 'Ballerina'	June berry (E)	3.5-4 high, multi stem	as shown
Bet	Betula pubescens	Downy birch	3.5-4 high, multi stem	as shown
Mal	Malus 'Winter Gold'	Ornamental crabapple	3.5-4 high, multi stem	as shown
Pru	Prunus x subsp. 'Autumnalis R.'	Ornamental cherry	3.5-4 high, multi stem	as shown

PROPOSED MASS SHRUB PLANTING

Scientific name	Common name	Size	Densities
Cornus sericea 'Kelsey'	Dogwood 'Kelsey'	5L, 530-40cm high min.	9/m2
Cornus atrilpicifolia	Russian sage	5L, 50-60cm high min.	5/m2
Cornus 'Winter Flame'	Dogwood 'Winter Flame'	5L, 50-60cm high min.	5/m2

PROPOSED HERBACEOUS PLANTING

PERENNIAL MIX A (Sunny location)				
Scientific name	Common name	Size	Densities	
Anemone h. var. japonica 'Splendens'	Anemone	5L, CG	5/m2	
Perovskia atrilpicifolia	Russian sage	5L, CG	5/m2	
Penstemon 'Rich Ruby'	Beardtongues	2L, CG	7/m2	
Echinacea purpurea	Purple coneflower	2L, CG	9/m2	
Sanguisorba tanna	Burnet	2L, CG	7/m2	
Salvia 'Caradonna'	Sage	2L, CG	9/m2	

PERENNIAL MIX B (Sunny location)				
Scientific name	Common name	Size	Densities	
Alchemilla mollis	Garden Lady's mantle	2L, CG	7/m2	
Geum 'Totally Tangerine'	Avens	2L, CG	7/m2	
Astrantia major 'White Giant'	Masterwort	2L, CG	7/m2	
Carex testacea	New Zealand Sedge	2L, CG	7/m2	
Rudbeckia fulgida	Coneflower	2L, CG	7/m2	
Crocus 'George Davison'	Coppertips	2L, CG	5/m2	
Kniphofia 'Sunningdale Yellow'	Red hot poker	2L, CG	9/m2	

PERENNIAL MIX C (Sunny location)				
Scientific name	Common name	Size	Densities	
Anemone h. lessoniana	New Zealand Wind Grass	2L, CG	5/m2	
Diarema pulcherrimum 'Blackbird'	Wand flower	2L, CG	5/m2	
Lisimachia 'Atropurpurea'	Loosestrife	2L, CG	9/m2	
Aquilegia 'Black Barlow'	Columbine	2L, CG	9/m2	
Anthriscus sylvestris 'Ravenswing'	Cow parsley	2L, CG	7/m2	
Verbascum 'Petra'	Mullein	2L, CG	9/m2	

PERENNIAL MIX D (Shaded location)				
Scientific name	Common name	Size	Densities	
Erythronium 'Pagoda'	Fawn lily	2L, CG	15/m2	
Euphorbia am. var. robbiae	Spurge	2L, CG	12/m2	
Dryopteris erythrosia	Copper shield fern	2L, CG	7/m2	
Helleborus x hybridus 'Harvington Apricot'	Stinking hellebore	2L, CG	7/m2	
Liriope muscari 'Monroe White'	Lily turf	2L, CG	12/m2	
Polystichum aculeatum	Hard shield fern	2L, CG	5/m2	

IMPORTANT NOTES:

All plant stock, plant handling and planting to be undertaken in accordance with the following British Standard Specifications and Code of Practice:
 BS 3936: 1992 Part 1 Nursery Stock. Specification for Trees and Shrubs. BS 3936: 1981 Part 10 Nursery Stock. Ground Cover Plants. BS 4428: 1989 Recommendations for general landscaping operations. BS 3936-9: 1998 Nursery Stock - Specification for bulbs, corms and tubers.
 The Code of Practice for Plant Handling 1985 (Horticultural Trades Association).
 Plants not covered by BS 3936 shall be healthy specimens of good shape and balanced branch structure with abundant fibrous roots. Plants are to show vigour of growth within the growing season prior to lifting.

Plant Stock

Plant stock to be supplied in accordance with the size and description specified on the plant schedule. Plant stock shall be healthy, vigorous, and free from pests and diseases and suitably hardened off for the proposed situation of planting, and lifted at a time in accordance with good nursery practice. Stock shall have a well formed fibrous root system and be free from perennial weeds. All Bulbs to be sourced from approved suppliers and will be of good condition, firm, not dried and free of pests, disease and fungus.

Tree Planting

Trees of the same species shall be uniform in size, shape and in good condition.

Shrub and Herbaceous Perennial Planting

Shrubs and herbaceous plants of the same species shall be uniform in size, shape and in good condition.

Mulching

All soft landscape areas to be mulched with a 50 mm layer of ornamental 'TMA Bark Supplies' or similar grade bark mulch

Location Plan

